

In Pl 1 DRAGONFLY

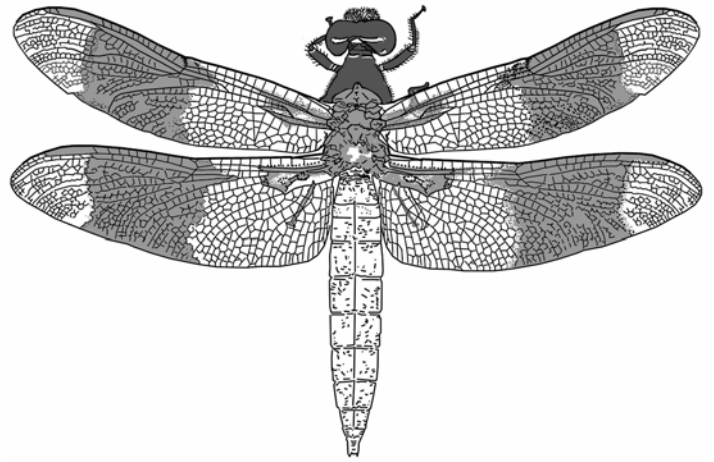
TRAITS: Adult insect with long, thin abdomen; six legs, large eyes, four wings, and no tail. Nymph $\frac{1}{2}$ to $\frac{3}{4}$ inch, brownish, long legs, segmented abdomen.

HABITAT: Adults live near water. Nymphs on the bottom of pools, ponds, streams or on aquatic plants.

FOODS: Adults chew small flying insects including mosquitoes and black flies. Nymphs prey on mosquito larva, snails, tadpoles, and small fish.

THREATS: Adults eaten by fish and swallows. Nymphs eaten by fish, frogs, birds, and aquatic insects.

"GEE WHIZ": Adults catch mosquitoes in the air with their basket-like legs and eat while in flight.



In Pl 2 GRASSHOPPER

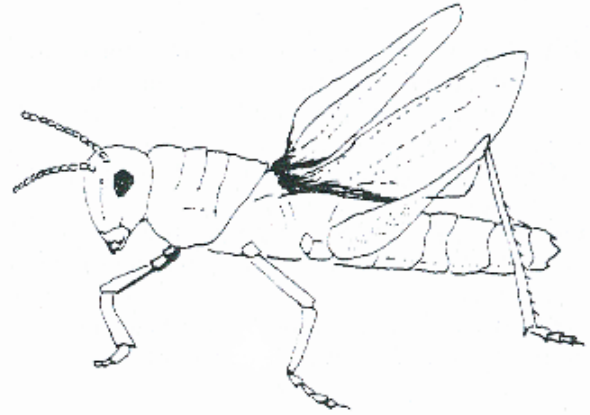
TRAITS: Insects with large hind legs for jumping, most have thickened, narrow front wings and hind wings that are clear and large; all have shredding, chewing mouth parts.

HABITAT: Wet prairie. Most habitats with herbaceous plants and grasses.

FOODS: Chew mostly grasses. Also leaves, stems and other parts of living plants. At times killing the plant.

THREATS: Chickadees, sparrows, and other insect eating birds. Also snakes, toads, and voles.

"GEE WHIZ": Each species has a distinct call that is used to attract mates and keep away competition.



In Pl 3 WATER STRIDER

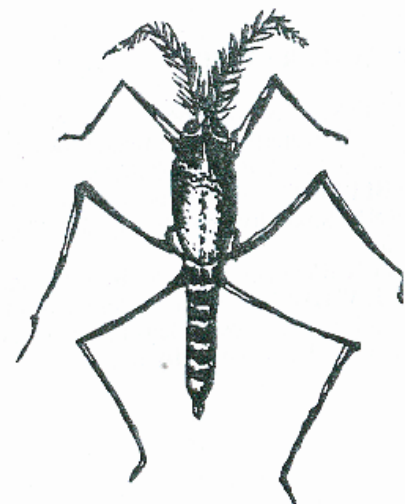
TRAITS: Insect with thin body and four long legs, tips covered with tiny hairs that repel water and allows the insect to "skate" across the water surface.

HABITAT: Vernal pools, ponds, streams.

FOODS: Sucks the juices of small living or dead insects and other creatures on the water surface.

THREATS: Water birds, frogs, and fish.

"GEE WHIZ": A water strider might sink and drown if the hairs on its legs become wet. It must crawl out onto vegetation to dry out.



In Pl 4 APHID

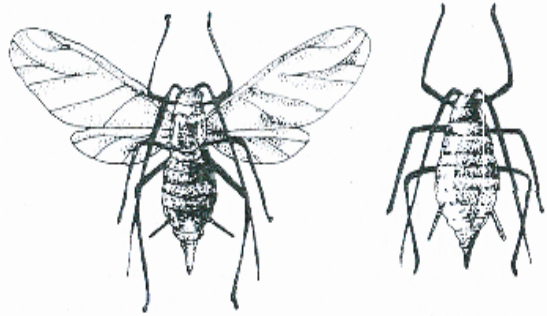
TRAITS: A pear-shaped insect with winged and wingless forms in the same species; most have two tubes (called cornicles) on the top of their abdomen.

HABITAT: Prairies, shrubs, forest. On leaves and stems of plants.

FOODS: Consume all of plant by sucking juices, causing plants leaves to wilt, curl, and turn yellow.

THREATS: Ladybird beetles, lacewings, wasps, chickadees, wrens, and sparrows.

"GEE WHIZ": Aphids produce a secretion, called honeydew. To obtain this honeydew, certain ants protect and tend aphids.



In Pl 5 CADDISFLY

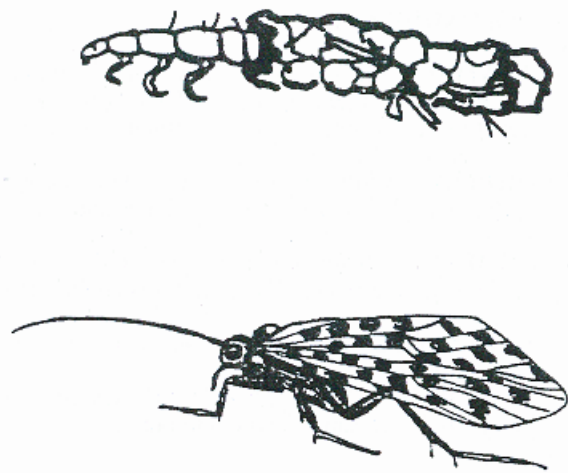
TRAITS: Adults have wings covered with hairs and very long antennae. Larvae have hook-like structures at the end of their abdomen and some have feather-like gills.

HABITAT: Adults are nocturnal and rest in cool, dark places. Larvae live in cases in vernal pools, ponds, and streams.

FOODS: Adults chew on flower nectar. Larvae feed on plankton, aquatic plants, algae, and aquatic larvae.

THREATS: Diving beetles, frogs, fish, waterfowl, shorebirds, and bats.

"GEE WHIZ": Many larvae build cases made of leaves, twigs or sand in which to pupate.



In Pl 6 MOSQUITO

TRAITS: Adult insects have scales and a long, tubular mouthpart for sucking. Larvae are worm-like.

HABITAT: Common in all habitat types. Larvae are aquatic and live in vernal pools, ponds and still water.

FOODS: Adult females suck blood from birds and mammals; adult males feed on flower nectar. Larvae feed on algae, protozoan and detritus.

THREATS: Adults eaten by dragonflies, frogs, swallows, bats, fish; larvae are eaten by dragonfly, damselfly and other aquatic insects, as well as water birds and fish.

"GEE WHIZ": Some female mosquitoes carry microscopic organisms that cause disease in mammals and birds.

