

In Pl 13 BUTTERFLY

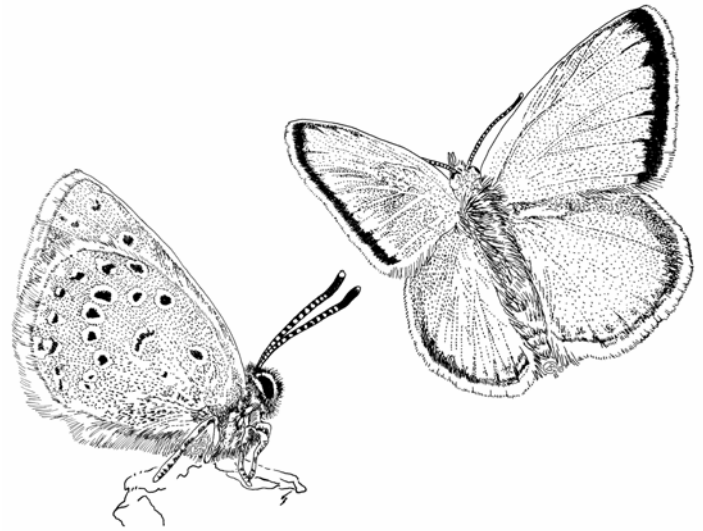
TRAITS: Adults have 4 large wings with powder-like scales, large compound eyes, long antennae with clubs at the tips and tube-like mouths that coil up when not in use.

HABITAT: Prairie, shrub, forest. Most larvae can live only on a particular species of plant.

FOODS: Adults siphon the nectar out of flowers; most larvae chew one special species of plant leaves, fruit, stems or roots.

THREATS: Ground beetles, wasps, dragonflies, birds.

"GEE WHIZ": Larvae from a chrysalis for pupation, starting as caterpillars and emerging from the cocoon as a winged butterfly. The Fender's blue butterfly, is currently listed as an endangered species.



In Pl 14 SNAIL

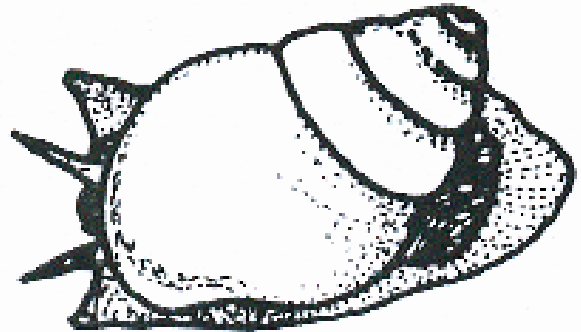
TRAITS: Mollusk with flat creeping foot, one-piece shell and a well-developed head.

HABITAT: Snails live on land as well as in the water. Most aquatic snails live on rocks or sandy or silty bottoms, or on aquatic plants.

FOODS: Most snails graze on algae, plants, detritus and fungi.

THREATS: Canada goose, mallard, Western meadowlark.

"GEE WHIZ": There are over 35,000 living species of snails.



In Pl 15 THRIPS

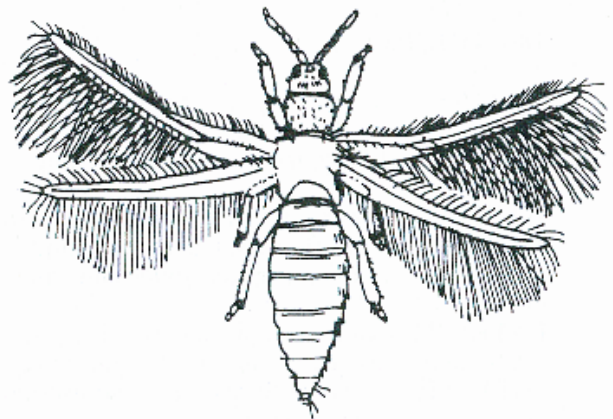
TRAITS: Tiny winged or wingless long-bodied insects. If winged, they have 4 narrow wings with fringes of long hairs; antennae, mouth-parts used for rasping or sucking.

HABITAT: Wet prairie, shrub, and forest. On flower and leaves of plants.

FOODS: Most suck on seeds, flowers, leaves, buds and fruit; a few eat small insects such as mites.

THREATS: Chickadees, wren, ants, wasps, ground beetle, ladybird beetles.

"GEE WHIZ": Some Thrips carry microscopic organisms that cause plant diseases.



In Pl 16 YELLOWJACKET

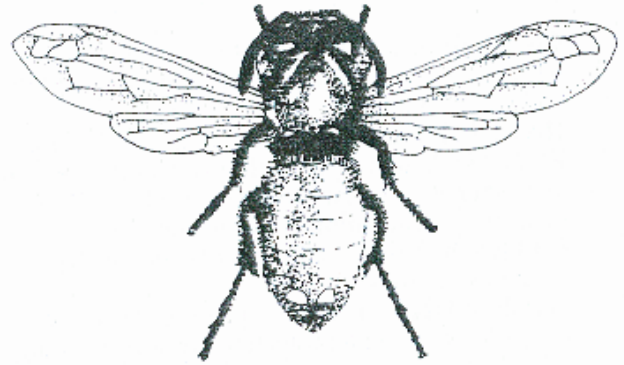
TRAITS: Insect with bright black and yellow or white markings; the tip of the abdomen is pointed and has a stinger.

HABITAT: Prairie, Shrub, Forest.

FOODS: Adults suck flower nectar, and chew on ripe fruit and other insects. The queen or workers feed larvae chewed caterpillars, flies, meat from dead animals, and nectar.

THREATS: Adults eaten by Violet Green Swallows, Western Scrub Jay. Larvae eaten by raccoon.

"GEE WHIZ": They build paper nests from wood fiber in the ground or in a protected site above ground.



In Pl 17 LADYBIRD BEETLE

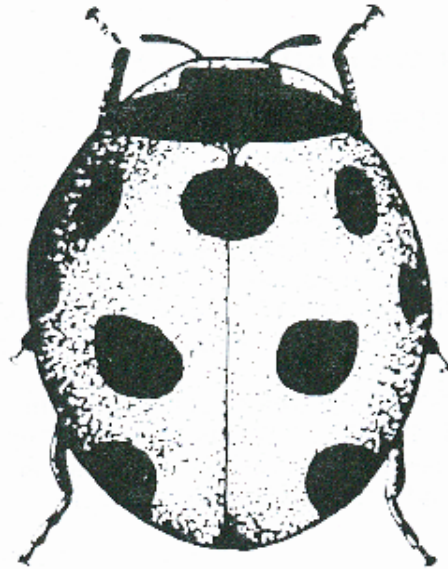
TRAITS: Brightly colored insects with very round bodies, thin front wings, usually with spots on them. Larvae are usually dark with bands of color and covered with spines.

HABITAT: Prairie, shrub, forest. Both adults and larvae live on plants frequented by aphids.

FOODS: Most adults and larvae chew up aphids and other small insects. A few species eat plant leaves.

THREATS: Chickadees, American Robin, and Red Wing Blackbird.

"GEE WHIZ": Also known as "ladybugs", the adult beetles gather by the hundreds and hibernate under fallen branches and rocks.



In Pl 18 SPRINGTAIL

TRAITS: Very small, less than 1/16 of an inch, wingless insects with chewing mouth parts and a tube on the underside of the first abdominal segment.

HABITAT: Prairie, shrub, forest. In moist soil, duff, vegetative litter. A few species live in trees and a few live in ground water.

FOODS: Chew on algae, lichens, pollen, and decaying materials.

THREATS: Ground beetles, spiders, birds.

"GEE WHIZ": Its furcula (tail-like forked organ) folds down under the body and releases, springing the animal 3 to 4 inches into the air.

