

In P1 7 GROUND BEETLE

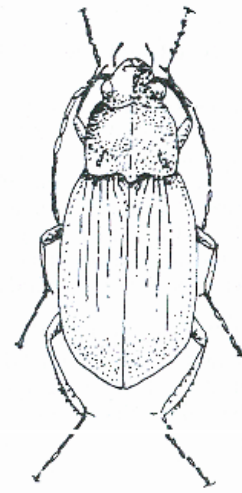
TRAITS: Dark, flattened insects with thick front wings with grooves running from front to back; long legs, large mouth parts.

HABITAT: On land prairie, shrub and forest.

FOODS: Varies by species; some adults chew on dead animal remains; others, on worms and insects such as caterpillars, slugs, and snails.

THREATS: Crow, robin, sparrows, and voles.

"GEE WHIZ": Most ground beetles are active only at night and hide during the day under logs, rocks, or leaf litter.



In P1 8 CARRION BEETLE

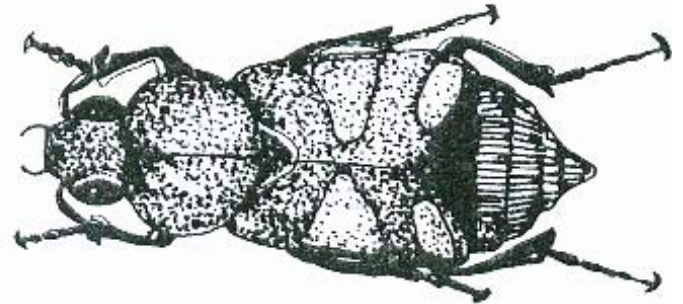
TRAITS: Large, round-bodied insects with thickened front wings; black with red, orange, or yellow markings; clubbed antennae. The larvae (grub) is worm-like.

HABITAT: In soil or litter of prairie, shrub, or forest.

FOODS: Scavengers, chewing on dead animals and prey on other insects that feed on dead animals such as fly larvae. Grub feed similar to adults.

THREATS: Chickadees and other birds, mice, and voles.

"GEE WHIZ": The adult female lays her eggs and buries them with dead animals. Some may bury the carcass of a small animal.



In P1 9 ANT

TRAITS: Body clearly divided into 3 segments by narrow constrictions; last segment forms a pointed end; only certain kinds of adults have wings.

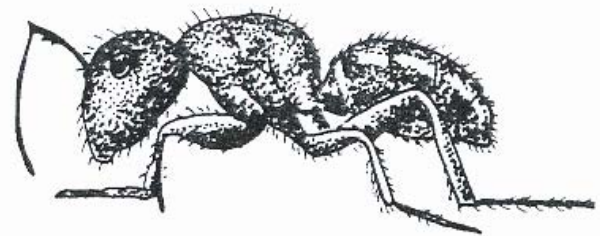
HABITAT: Wet prairie, shrub, and forests. In colonies in the ground or in dead wood.

FOODS: Varies by species. Some feed by chewing on foods such as flower nectar, plant juices or aphid honeydew; others feed on seeds, leaves or dead organisms, some are predators on other insects.

Young are fed by mouth by worker ants.

THREATS: Flickers, wren, thrushes, and sparrows.

"GEE WHIZ": Some ants protect aphids from predators, and eat the honeydew the aphid produce.



In Pl 10 SPIDER

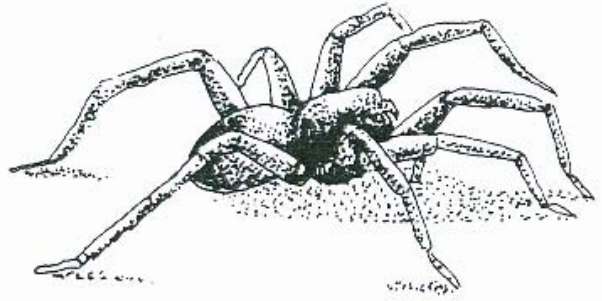
TRAITS: Small animals with 8 legs; the body appears divided into a large abdomen and a small head with large fangs.

HABITAT: Prairie, shrub, forest. In and on soil or leaf litter, on plants, or in rotten logs.

FOODS: This predator sucks the juices of insects such as aphids, flies, and mosquitoes.

THREATS: Insect-eating birds, such as the wren, chickadee, and sparrow.

"GEE WHIZ": Webs may be attached to objects in the air or on the ground. The silk produced by spiders is one of the strongest natural fibers known.



In Pl 11 SEGMENTED WORM

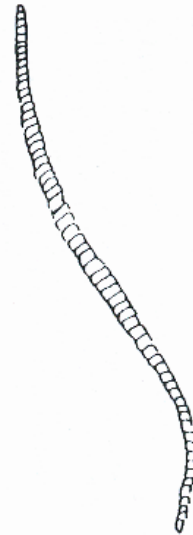
TRAITS: Slender-bodied worms with distinct segments along the body.

HABITAT: In many habitats; live in moist soil and decaying vegetation.

FOODS: Varies by species; those that live in soil eat decaying vegetation, algae or other invertebrates.

THREATS: Ground beetles, birds like the robin, and some mammals.

"GEE WHIZ": Some segmented worms are parasites on other animals, including fish, birds, insects, and snails.



In Pl 12 BUMBLE BEE

TRAITS: Insects with 4 wings, hind wings much smaller than front ones; hairy, black body covered with yellow or orange markings.

HABITAT: Prairie, shrub, forest. Any habitat with a variety of nectar producing flowers. Nest in colonies in the ground.

FOODS: They lap up the nectar and pollen of flowering plants.

THREATS: Swallows, warblers.

"GEE WHIZ": Bees are among the most important plant pollinators; some species of bee eat the nectar and pollen and pollinate only one species of plant.

