

## M7 BEAVER

**TRAITS:** Rich brown color, scaly paddle shaped tail, large front teeth, and webbed hind feet.

**HABITATS:** Streams and lakes with trees or shrubs along banks.

**FOODS:** Eats bark, leaves, and small twigs of trees, preferably cottonwood, poplar, birch, maple, willow, and alder.

**THREATS:** Bear, coyote and otter will prey on the beaver, but their lodges offer excellent protection.

**“GEE WHIZ”:** Beavers construct dams near which they build their lodge and its underwater access. Beaver families share lodges.



## M8 TOWNSEND VOLE

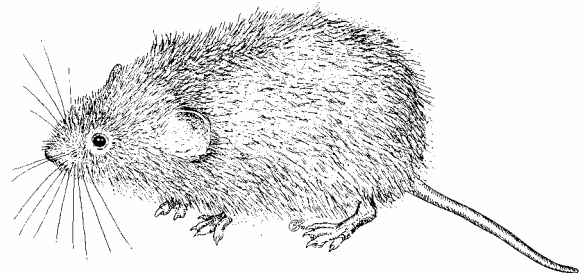
**TRAITS:** Dark brown mixed with black on top, grayish on bottom. Long blackish tail.

**HABITATS:** Wet prairies, upland prairies, and emergent wetlands.

**FOODS:** Velvet grass and other grasses, horsetail, alfalfa, clover, rushes, sedges, purple-eyed grass, buttercups, fungi, and bark of rose and cinquefoil. Stores bulbs in winter.

**THREATS:** Short-eared owl, hawks, foxes, skunks, snakes, great blue heron, and cats.

**“GEE WHIZ”:** This animal is a good swimmer and often constructs the entrance to its burrow underwater. Also nests in grass during summer and winter.



## M9 LITTLE BROWN MYOTIS (BAT)

**TRAITS:** Glossy fur colored tan, reddish brown, or dark yellowish brown. Short black ears.

**HABITATS:** Under bridges in summers. Other times in trees in open areas. Hibernates in caves in winter.

**FOODS:** Beetles, crane flies, wasps, and moths.

**THREATS:** Hawks, owls, raccoons.

**“GEE WHIZ”:** This amazing animal can live up to 33 years, and have high interaction with humans. They can live in man-made bat boxes.

