

Mi 7 CYANOBACTERIA

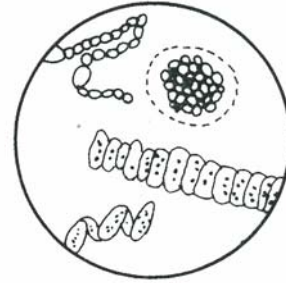
TRAITS: Microscopic organisms that are single-celled or in colonies of cells; can appear blue-green, brown, red or yellow depending on pigments.

HABITATS: Small ponds and lakes.

FOODS: Make own by photosynthesis.

EATEN BY: Protozoans, roundworms, segmented worms, springtails, and mites.

“GEE WHIZ”: The Red Sea gets its name from the occasional abundance of blue-green algae, which is red.



Mi 8 PROTOZOA

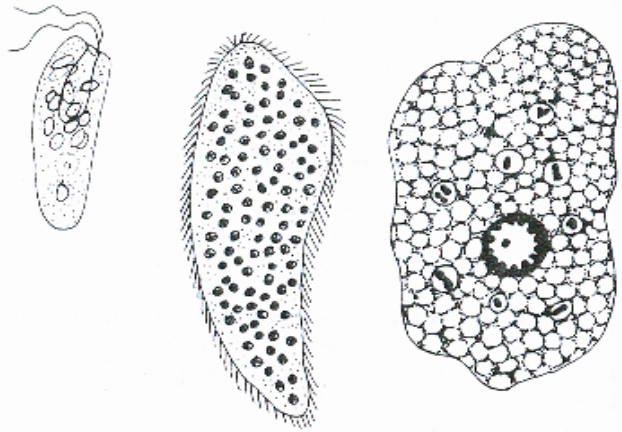
TRAITS: Microscopic animals made up of a single cell or a group of identical cells.

HABITATS: In water droplets on leaves, litter, under rocks, and in soil.

FOODS: Varies by species; many eat dead plant material and animal waste; others feed on bacteria, algae, or other protozoa.

EATEN BY: Protozoa, round worms, segmented worms.

“GEE WHIZ”: Some protozoa live in the intestines of certain animals and aid them in digestion of foods; many are parasites of animals.



Mi 9 FUNGI

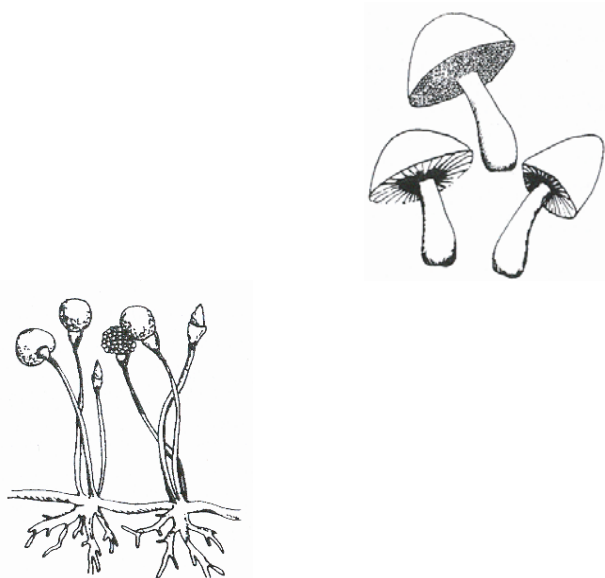
TRAITS: Characterized by absence of chlorophyll and subsisting upon dead or living organic matter. Includes mushrooms, molds, and mildews.

HABITATS: Soil, litter, rotting logs, and dead vegetation.

FOODS: Mainly dead plant material and animal wastes.

EATEN BY: Western gray squirrels and beetles.

“GEE WHIZ”: Fungi play a vital role in the natural cycle of life. By decomposing dead animal and plant material they release locked-up nutrients, which can then be recycled in a new generation of plant and animal life.



Mi 10 GREEN ALGAE

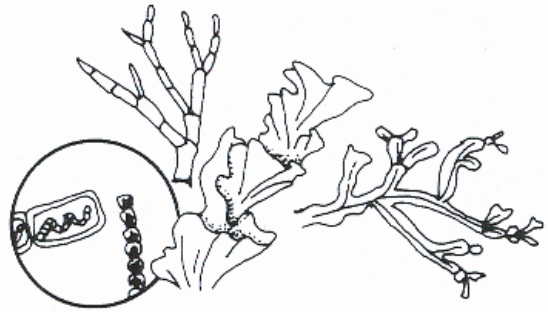
TRAITS: Single or multi-cell organisms. Like plants, algae contain chlorophyll so they are capable of photosynthesis. They occur individually, in filaments, or in colonies.

HABITATS: Often occur wherever water occurs; some grow in damp or moist soil or in tree bark.

FOODS: Make own by photosynthesis.

EATEN BY: Protozoa, worms, snails, other aquatic invertebrates, fish, geese, ducks.

“GEE WHIZ”: The cells store food in the form of starch. Some algae join with certain fungi to form lichens.



Mi 11 LICHENS

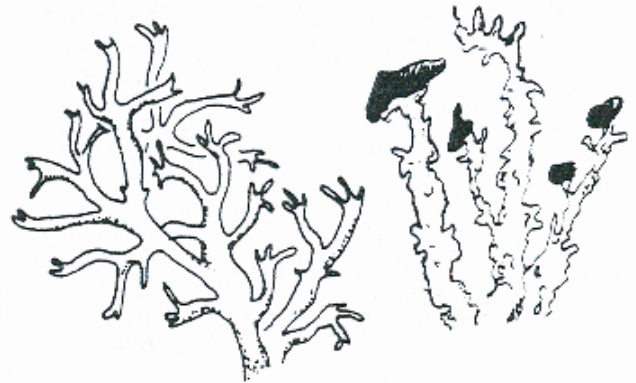
TRAITS: Made up of two different organisms involved in a symbiotic relationship such as fungi and algae, or fungi and cyanobacteria.

HABITATS: Trees, rocks, bare ground, fence-posts, dead wood, etc.

FOODS: Lichens make their own food by photosynthesis.

THREATS: Eaten by deer. Hummingbirds use lichen to build nests.

“GEE WHIZ”: Lichens are able to survive very long periods of unfavorable conditions by becoming dormant; some species were revived after 100 years of dormancy.



Mi 12 HUMAN

TRAITS: Large mammals that walk erect on two legs and have forelimbs with opposable thumbs.

HABITATS: People are able to live in a wide variety of environments.

FOODS: Grains, meats, plants, anything edible.

EATEN BY: People have no true predators in WEW. (There are poisonous plants, which if eaten could kill humans. There are some insects that some people are highly allergic to that may cause death.)

“GEE WHIZ”: Humans have the ability to make decisions that can help and conserve wetlands or destroy them.

