

01 WESTERN POND TURTLE

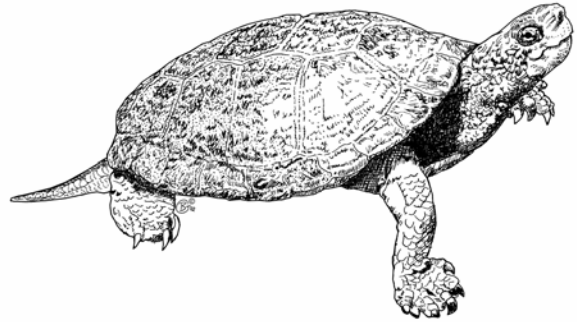
TRAITS: This brown or black turtle can grow to between 6-8 inches and weigh up to 2.5 lbs. Their brilliant yellow and black lower shell distinguishes them from other wetlands turtles.

HABITATS: They inhabit slow-moving streams, ponds, and lakes with muddy bottoms. Nest on land.

FOODS: This species feasts on insects, frogs and their eggs, and carrion (dead animal meat).

THREATS: Birds, fish, or the American bullfrog during their first year. Raccoons and opossum dig up nests and eat eggs.

“GEE WHIZ”: Their protective shell can help them live up to fifty years.



02 GARTER SNAKE

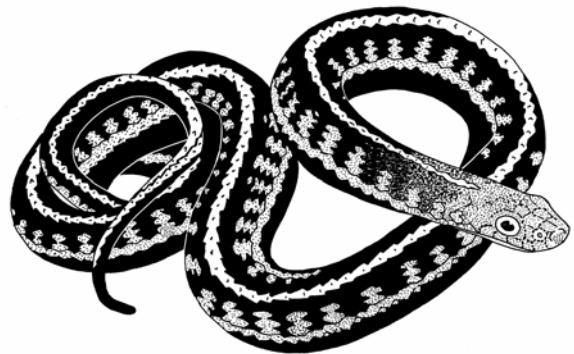
TRAITS: This snake has many different patterns and colors, but generally is black to green with stripes down each side.

HABITATS: Wet prairie and upland prairies, emergent vegetation, thickets, and woodlands.

FOODS: Garter snakes eat frogs, toads, salamanders and earthworms. They also eat mice and fish.

THREATS: Herons and hawks, Belted Kingfisher, and Western meadowlark.

“GEE WHIZ”: This snake has a defense mechanism that allows it to expel smelly musk when threatened. Garter snakes bear live babies as opposed to most reptiles, which lay eggs.



03 ROUGH-SKINNED NEWT

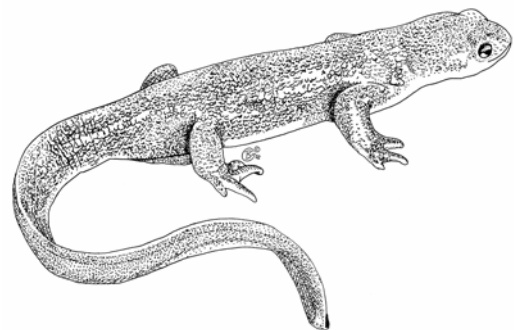
TRAITS: Has dry, pebbly skin that ranges in color from brown to reddish brown. An orange underside and long tail are distinguishing features.

HABITATS: Need breeding ponds during mating season. Forest wetlands, wet prairies and upland prairies.

FOODS: Amphibian eggs, aquatic invertebrates, worms, larvae and small slugs.

THREATS: Belted Kingfisher and common garter snakes (have an immunity to their poison.)

“GEE WHIZ”: When threatened, the rough-skinned newt will elevate its head and tail and show its orange belly to warn predators of the poisonous toxins its skin secretes.



04 PACIFIC CHORUS FROG (PACIFIC TREE FROG)

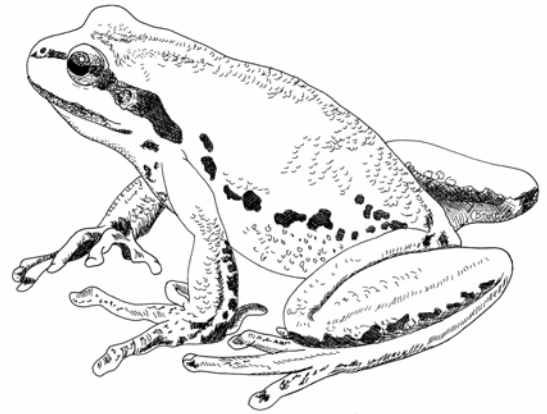
TRAITS: The smooth skin on the back can be spotted, green, brown, or black. The chest is white and rough.

HABITATS: Live in trees in woodlands, wetland and upland prairies. Breed among emergent vegetation.

FOODS: Eat spiders and other insects that they catch with their sticky tongue.

THREATS: Herons, bullfrogs and raccoons. Tadpoles are eaten by fish and bullfrogs.

“GEE WHIZ”: The chorusing of this frog is often the background noise in evening. The distinctive feature of this frog call is the long “krrrek” as well as the “ribbit.”



05 BULLFROG

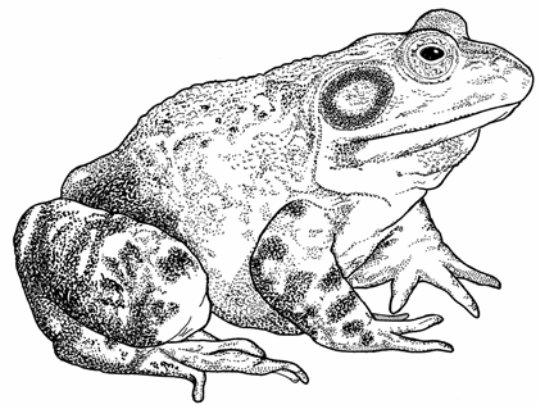
TRAITS: Large frogs ranging in color from dark green to light olive and have darker splotches and blotches marking their skin.

HABITATS: Warm, shallow water among emergent vegetation, ponds, and slow streams.

FOODS: Bullfrogs regularly capture snakes, worms, insects, frogs and tadpoles, and turtles. Occasionally bats and other bullfrogs.

THREATS: Great Blue Heron, Great Egret, Osprey, and Green Heron.

"GEE WHIZ”: To capture their food, bullfrogs practice “sit and wait” hunting. They hold still and wait for prey to come near, then flash out their long sticky tongue, and suck the victim into their mouth.



06 NORTHWESTERN SALAMANDER

TRAITS: This amphibian is brown all over, with a grayish or dark brown body and a lighter brown belly.

With their long tail, they can grow up to 20 cms.

HABITATS: Wet prairie, upland prairies, forests wetlands. Need relatively still water for breeding. Spends most of its life underground and under rocks and logs near water.

FOODS: Mostly insects, spiders, worms, slugs, and snails. Young larvae eat water fleas.

THREATS: Great Blue Heron and various mammals when they can catch them.

“GEE WHIZ”: When this animal feels threatened, they excrete a white sticky substance that is slightly toxic, but not dangerous.

